

Blessed Evening

Steve Kloser

Vocal



Piano



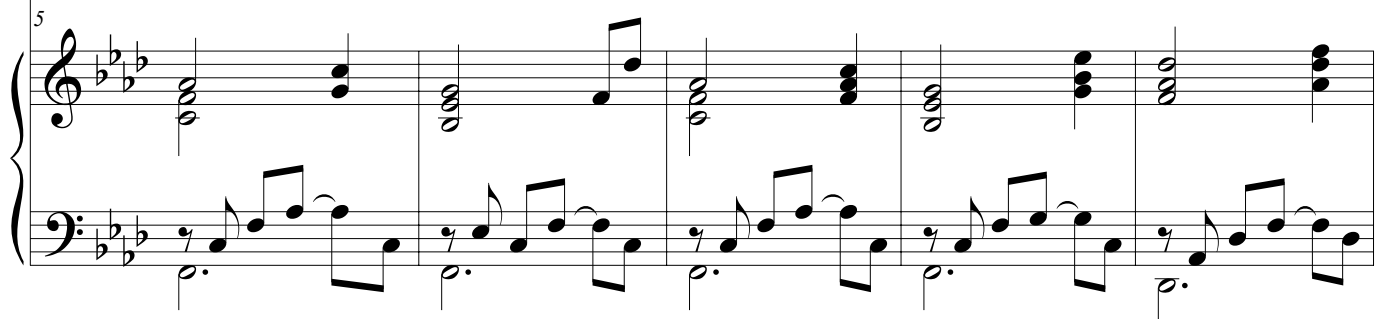
The piano accompaniment for the first system consists of two staves. The right hand plays a series of chords and moving lines, while the left hand plays a rhythmic pattern of eighth notes with a steady bass line.

5



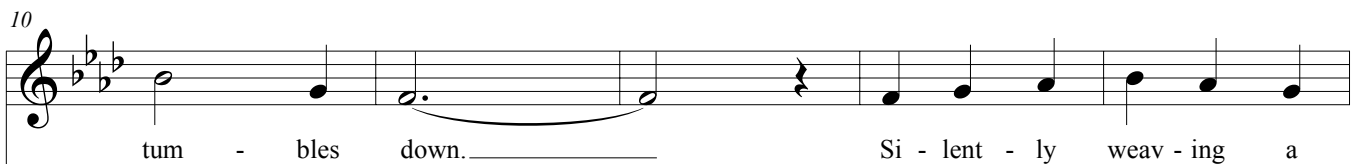
Oh, what an eve - ning! The fall - ing snow peace - ful - ly

Pno.



The piano accompaniment for the second system continues the musical texture from the first system, with the right hand providing harmonic support and the left hand maintaining the rhythmic foundation.

10



tum - bles down. Si - lent - ly weav - ing a

Pno.



The piano accompaniment for the third system concludes the piece with a final chord in the right hand and a final rhythmic flourish in the left hand.



Blessed Evening

2
15



Pno.

15

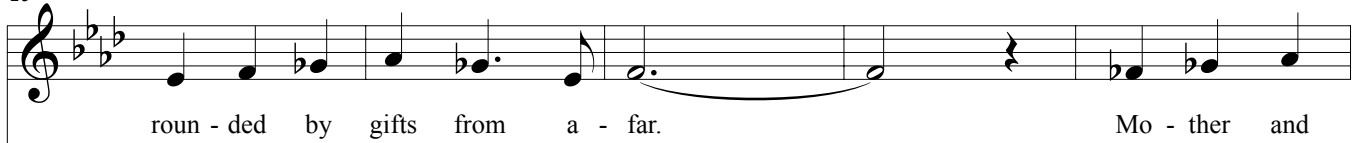
20



Pno.

20

25



Pno.

25



Blessed Evening

30

child and fa - ther, so wise, now sleep be - neath a

Piano accompaniment for the first system, measures 30-34. The right hand features chords and moving lines, while the left hand has a steady eighth-note accompaniment.

35

guid - ing star! Shep - herds a - bi - ding their flocks by

Piano accompaniment for the second system, measures 35-39. The right hand features chords and moving lines, while the left hand has a steady eighth-note accompaniment.

40

night, look sky - ward to hear the news.

Piano accompaniment for the third system, measures 40-44. The right hand features chords and moving lines, while the left hand has a steady eighth-note accompaniment.



Blessed Evening

4
45

Songs of glad ti - dings o'er fields of white *f* Ring Out! 'tis the


Pno.



50

King of the Jews. *ff* Sing Out! 'tis the King of the

Pno.



55

Jews! Peace to all on Earth!

Pno.



Blessed Evening

61

Peace to all on Earth.

Pno.

67

Pno.

74

Pno.

